

# DEA®



## CANTILEVER GATE SYSTEMS

SLIDING GATE MOTORS & CANTILEVER HARDWARE

# 800 Series - Light Duty System

Up to 5 m in length and 300 kg in weight

## KIT INCLUDES

2 x TROLLEY



XD1101.044

2 x GUIDE ROLLER



VD1203.044

1 x END STOP



VD1303.044

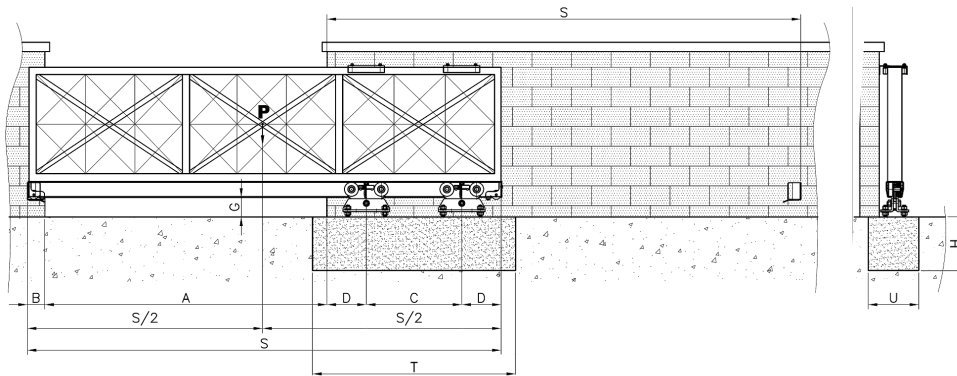


## RAIL

GALVANISED 6M RAIL



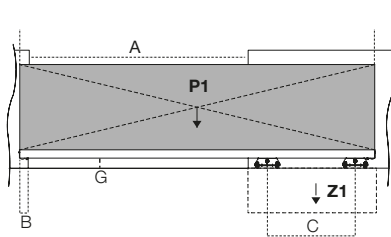
VD1406.044



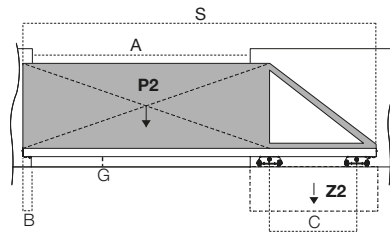
Scan the QR code to use the online size calculator from FAC



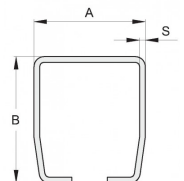
SCAN ME



Uniform load  
(weight of total length S)



Uneven load  
(weight of Dimensions overall opening A)

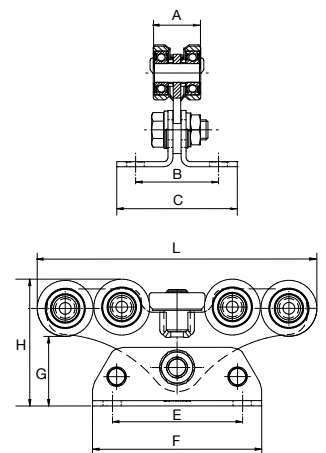


\*Measurements in mm

A	B	S
50	50	3

A (m)	C (m)	S (m)	P1 CUn (kg)	Z1 CUn (kg)	P2 NUn (kg)	Z2 NUn (kg)	P telaio (kg x ML)	TxUxH min (m)	Fixed Data
2	0.8	3.13	300	560	220	730	85	1.3 x 0.4 x 0.5	F1 max [kg]: 500 D [m]: 0.115 B [m]: 0.10 G min [m]: 0.05 E min [m]: 0.25 A/C : 2.5
2.5	1	3.83	300	560	220	730	70	1.5 x 0.4 x 0.5	
3	1.2	4.53	300	560	220	730	60	1.7 x 0.4 x 0.5	
3.5	1.4	5.23	300	560	220	730	50	1.9 x 0.4 x 0.5	
4	1.6	5.93	300	560	220	730	45	2.1 x 0.4 x 0.5	
4.5	1.8	6.53	300	560	220	730	40	2.3 x 0.4 x 0.5	
5	2	7.33	300	560	220	730	36	2.5 x 0.4 x 0.5	

A	Overall opening
B	Space for end stop
C	Distance between trolleys
D	Space for guide roller
G min	Minimum gate height from the ground
P1	Total gate weight (including all accessories) considering a uniform load
P2	Total gate weight (including all accessories) with UNEVEN load
P telaio	Total linear weight per meter NOT considering FAC Accessories (note: considering side S with a uniform load and side A with uneven load)
S	Total gate length
T, U, H	Suggested basement dimensions
Z1	Minimum basement weight for uniform gate's load
Z2	Minimum basement weight for gate with uneven load



\*Measurements in mm

A	B	C	E
38	66.5	96.5	100
F	G	H	L
130	53.5	97.5	215

# LIVI 6N

The recommended sliding gate motor for the 800 series kit  
(for leaves up to 600 kg)



The control board is in a lifted position at the front. Always accessible and perfect for small or narrow spaces.



Our motors are made with high-quality materials, such as steel and bronze, which guarantee reliability over time.



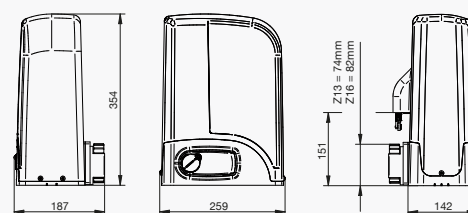
The NET-NODE has its own specific housing inside the motor, allowing the smart device to communicate with the control unit.



SCAN ME

More information can be found in the LIVIN brochure.

## DIMENSIONS



COD.	Art.				OTHER
614700	LIVI 6N	600		NET230N	
614701	LIVI6N/M	600		NET230N	• Motor control by encoder (NET230N versions)
614750	LIVI6/24N/F	600		NET24N	• Speed adjustment and slow down in opening and closing
614752	LIVI6/24N/M	600		NET24N	• Anti-crushing safety device
614751	LIVI6/24N/F-BOOST	600		NET24N	• Versions with increased speed only in BOOST models
614753	LIVI6/24N/M-BOOST	600		NET24N	



# 900 Series - Light/Medium Duty System

Up to 7 m in length and 450 kg in weight

## KIT INCLUDES

2 x TROLLEY



XD1101.053

2 x GUIDE ROLLER



VD1203.053

2 x END STOP



VD1300.053

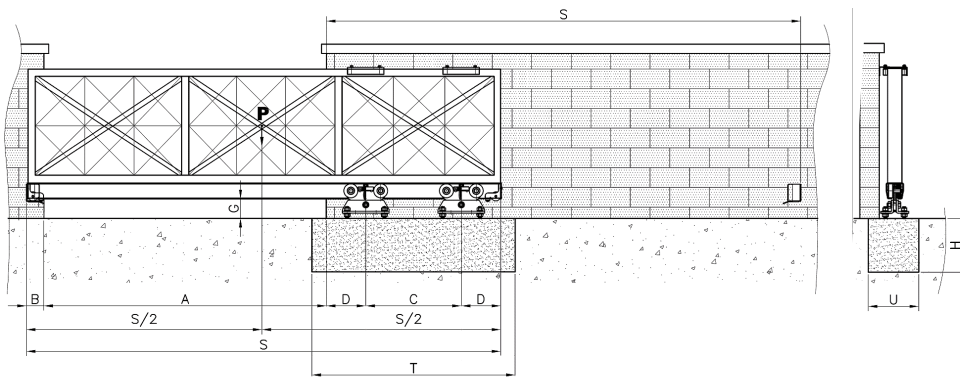
## RAIL

3M/6M RAIL



VD1403.053

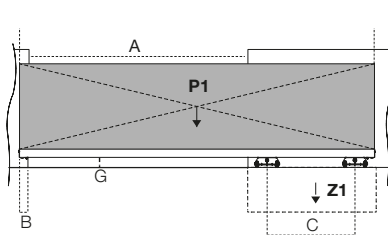
VD1406.053



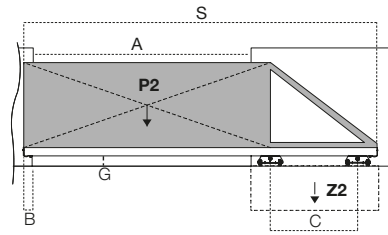
Scan the QR code to use the online size calculator from FAC



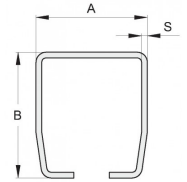
SCAN ME



Uniform load  
(weight of total length S)



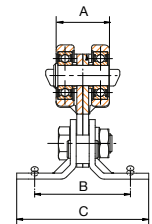
Uneven load  
(weight of Dimensions overall opening A)



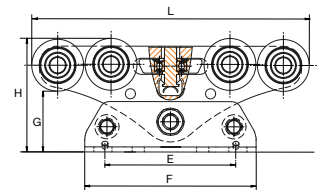
\*Measurements in mm

A	B	S
70	60	3.5

A (m)	C (m)	S (m)	P1 CUn (kg)	Z1 CUn (kg)	P2 NUn (kg)	Z2 NUn (kg)	P telaio (kg x ML)	TxUxH min (m)	Fixed Data
3	1.2	4.72	450	900	350	1200	85	1.8 x 0.5 x 0.5	F1 max [kg]: 800
4	1.6	6.12	450	900	350	1200	65	2.2 x 0.5 x 0.5	D [m]: 0.195
5	2	7.52	450	900	350	1200	50	2.6 x 0.5 x 0.5	B [m]: 0.13
6	2.4	8.92	450	900	350	1200	42	3.0 x 0.5 x 0.5	G min [m]: 0.06
7	2.8	10.32	450	900	350	1200	38	3.4 x 0.5 x 0.5	E min [m]: 0.30
									A/C : 2.5



A	Overall opening
B	Space for end stop
C	Distance between trolleys
D	Space for guide roller
G min	Minimum gate height from the ground
P1	Total gate weight (including all accessories) considering a uniform load
P2	Total gate weight (including all accessories) with UNEVEN load
P telaio	Total linear weight per meter NOT considering FAC Accessories (note: considering side S with a uniform load and side A with uneven load)
S	Total gate length
T, U, H	Suggested basement dimensions
Z1	Minimum basement weight for uniform gate's load
Z2	Minimum basement weight for gate with uneven load



\*Measurements in mm

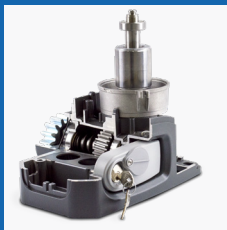
A	B	C	E
44.8	70.1	110.9	134
F	G	H	L
170	60.25	112.75	275.5

# LIVI 9N

The recommended sliding gate motor for the 900 series kit  
(for leaves up to 900 kg)



The control board is in a lifted position at the front. Always accessible and perfect for small or narrow spaces.



All of our motors are made with high quality materials, such as steel and bronze, which guarantee reliability over time.



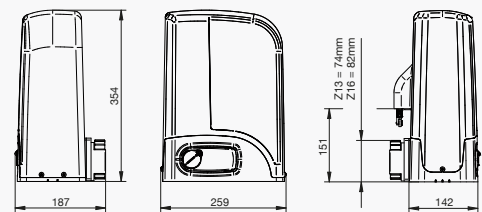
Battery kit with dedicated support (optional), to guarantee operation during power outages.



SCAN ME

More information can be found in the LIVIN brochure.

## DIMENSIONS




COD.	Art.				OTHER
615700	LIVI 9N	900		NET230N	<ul style="list-style-type: none"> <li>• Motor control by encoder (NET230N versions)</li> <li>• Speed adjustment and slow down in opening and closing</li> <li>• Anti-crushing safety device</li> </ul>
615701	LIVI9N/M	900		NET230N	
615750	LIVI9/24N/F	900		NET24N	
615751	LIVI9/24N/M	900		NET24N	

# 1000 Series - Medium Duty System

Up to 10 m in length and 800 kg in weight


**KIT INCLUDES**

**2 x TROLLEY**




XD1101.075

**2 x GUIDE ROLLER**



VD1200.075

**2 x END STOP**



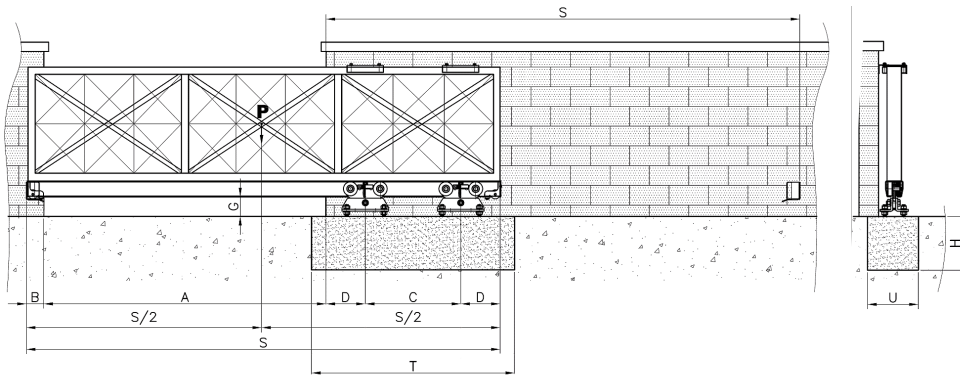
(Self-Centering)  
VD1303.075

**RAIL**

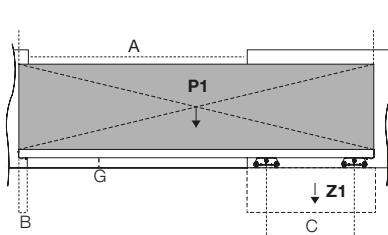
**3M/6M RAIL**



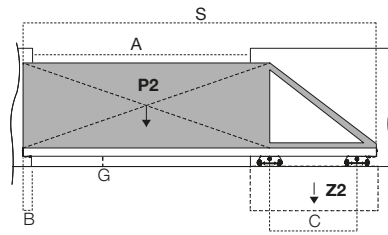
VD1403.075  
VD1406.075



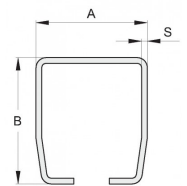
Scan the QR code to use the online size calculator from FAC



Uniform load  
(weight of total length S)



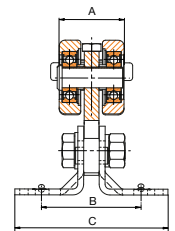
Uneven load  
(weight of Dimensions overall opening A)



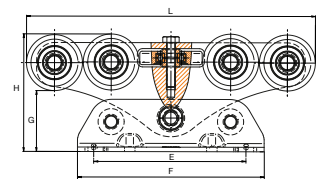
\*Measurements in mm

A	B	S
92	84	4

A (m)	C (m)	S (m)	P1 CUn (kg)	Z1 CUn (kg)	P2 NUn (kg)	Z2 NUn (kg)	P telaio (kg x ML)	TxUxH min (m)	Fixed Data
4	1.6	6.27	800	1500	600	2000	115	2.3 x 0.6 x 0.6	F1 max [kg]: 1350
5	2	7.67	800	1500	600	2000	95	2.7 x 0.6 x 0.6	D [m]: 0.260
6	2.4	9.07	800	1500	600	2000	80	3.1 x 0.6 x 0.6	B [m]: 0.15
8	3.2	11.87	800	1500	600	2000	55	3.9 x 0.6 x 0.6	G min [m]: 0.08
10	4	14.67	800	1500	600	2000	43	4.7 x 0.6 x 0.6	E min [m]: 0.35
									A/C : 2.5



A	Overall opening
B	Space for end stop
C	Distance between trolleys
D	Space for guide roller
G min	Minimum gate height from the ground
P1	Total gate weight (including all accessories) considering a uniform load
P2	Total gate weight (including all accessories) with UNEVEN load
P telaio	Total linear weight per meter NOT considering FAC Accessories (note: considering side S with a uniform load and side A with uneven load)
S	Total gate length
T, U, H	Suggested basement dimensions
Z1	Minimum basement weight for uniform gate's load
Z2	Minimum basement weight for gate with uneven load



\*Measurements in mm

A	B	C	E
66	100.2	155.8	200
F	G	H	L
250	81.5	157.5	387

# REV

The recommended sliding gate motor for the 1000 series kit  
(for leaves up to 1400 kg)



Additional fan ventilation  
(230V versions), with magnetic  
encoder.



The control board is in a lifted  
position at the front. Always  
accessible and perfect for small  
or narrow spaces.



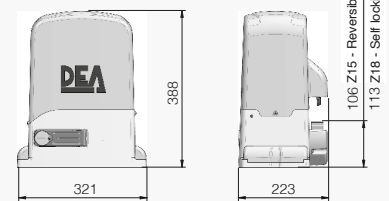
Models available with magnetic  
limit switches.



More information  
can be found in  
the REV  
brochure.

SCAN ME

## DIMENSIONS



COD.	Art.	kg	gears	DEA	OTHER
616000	REV220	1400*	2	NET230N	• Self locking with limit switches (220 & 24/F)
616003	REV220/M	1400*	2	NET230N	• Self-locking (220/M & 24/M)
616001	REV220/RF	1400*	3	NET230N	• Not self-locking with brake in opening and closing (FR & FRM only)
616004	REV220/RFM	1400*	3	NET230N	• Speed adjustment and slow down in opening and closing
616011	REV24/F	1400*	3	NET24N	• Motor control by encoder and obstacle detection (NET230N)
616012	REV24/M	1400*	3	NET24N	• Oil bath (RF/RFM only)

\* If using an oversized pinion art. Z22, the maximum weight of the leaf should be reduced by 30%

# 2000 Series - Heavy Duty System

Up to 14 m in length and 1200 kg in weight

KIT INCLUDES

2 x TROLLEY



VD1100.100

2 x GUIDE ROLLER



VD1200.100

2 x END STOP



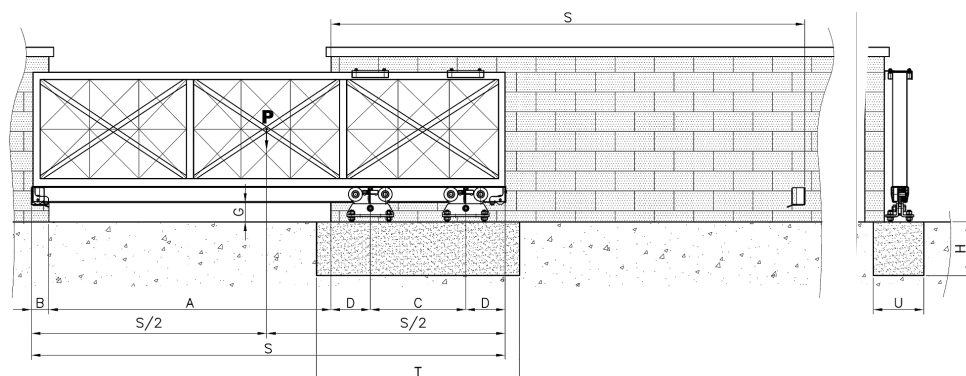
VD1301.100

RAIL

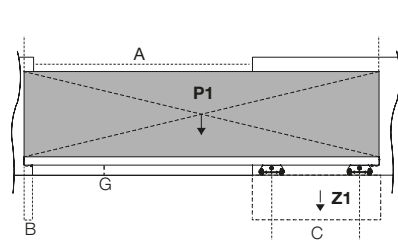
3M/6M RAIL



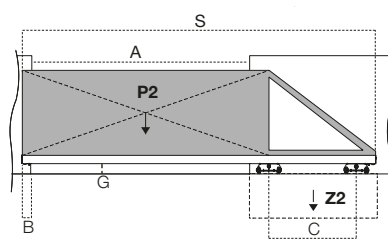
VD1403.100  
VD1406.100



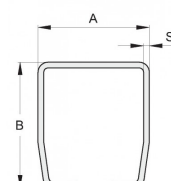
Scan the QR code to use the online size calculator from FAC



Uniform load  
(weight of total length S)



Uneven load  
(weight of Dimensions overall opening A)

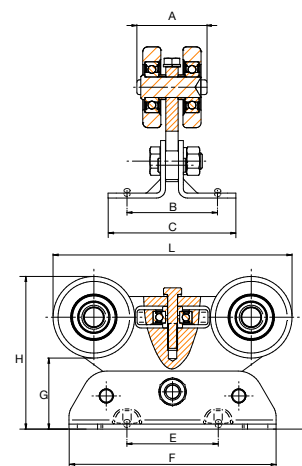


\*Measurements in mm

A	B	S
97	110	5

A (m)	C (m)	S (m)	P1 CUn (kg)	Z1 CUn (kg)	P2 NUn (kg)	Z2 NUn (kg)	P telaio (kg x ML)	TxUxH min (m)	Fixed Data
6	2.4	9.13	1200	2300	900	3000	115	3.3 x 0.8 x 0.6	F1 max [kg]: 2000
7	2.8	10.53	1200	2300	900	3000	95	3.7 x 0.8 x 0.6	D [m]: 0.290
8	3.2	11.93	1200	2300	900	3000	85	4.1 x 0.8 x 0.6	B [m]: 0.15
10	4	14.73	1200	2300	900	3000	65	4.9 x 0.8 x 0.6	G min [m]: 0.08
12	4.8	17.53	1200	2300	900	3000	50	5.7 x 0.8 x 0.6	E min [m]: 0.45
14	5.6	20.33	1200	2300	900	3000	46	6.5 x 0.8 x 0.6	A/C : 2.5

A	Overall opening
B	Space for end stop
C	Distance between trolleys
D	Space for guide roller
G min	Minimum gate height from the ground
P1	Total gate weight (including all accessories) considering a uniform load
P2	Total gate weight (including all accessories) with UNEVEN load
P telaio	Total linear weight per meter NOT considering FAC Accessories (note: considering side S with a uniform load and side A with uneven load)
S	Total gate length
T, U, H	Suggested basement dimensions
Z1	Minimum basement weight for uniform gate's load
Z2	Minimum basement weight for gate with uneven load



\*Measurements in mm

A	B	C	E
85.5	104	155.8	95.8
F	G	H	L
250	85.75	184.25	288.5



# GULLIVER

The recommended sliding gate motor for the 2000 series kit  
(for leaves up to 2100 kg)



Motor with encoder technology and fan-assisted ventilation, to guarantee intensive use



Metal mechanics and machined steel gears to ensure maximum performance and durability

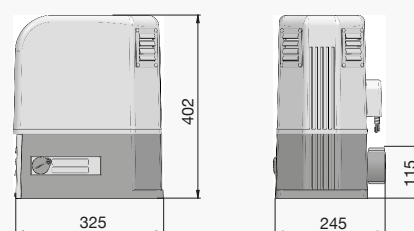







Complete with a removable control panel to facilitate the wiring of all accessories



More information can be found in the GULLIVER brochure.

## DIMENSIONS




COD.	Art.				OTHER
613300	18NET	2100		NET230N	<ul style="list-style-type: none"> <li>• Self-locking</li> <li>• Electromechanical limit switches (18NET)</li> <li>• Magnetic limit switches (18NET/M)</li> </ul>
613301	18NET/M	2100		NET230N	<ul style="list-style-type: none"> <li>• Speed adjustment and slow down in opening and closing</li> <li>• Motor control by encoder and obstacle detection</li> </ul>

# 2000H Series - Extra Heavy Duty System

Up to 20 m in length and 2500 kg in weight


**KIT INCLUDES**

2 x TROLLEY



VD1110.100

2 x GUIDE ROLLER



VD1200.100

2 x END STOP



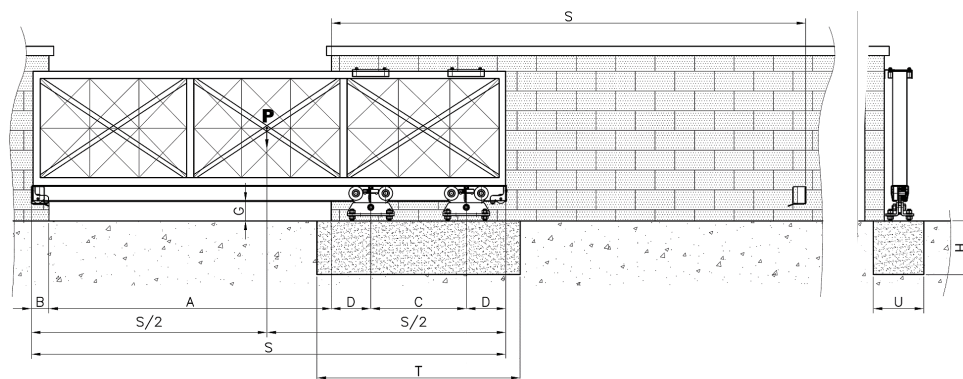
VD1301.100

**RAIL**

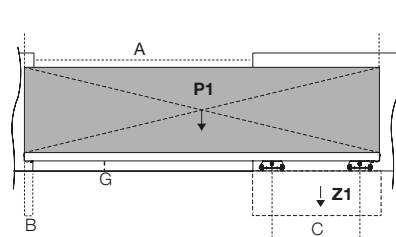
3M/6M RAIL



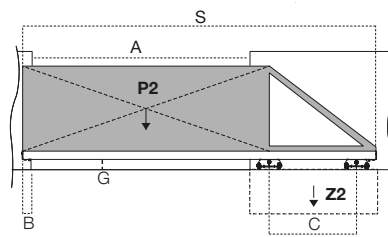
VD1403.100  
VD1406.100



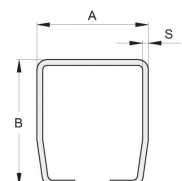
Scan the QR code to use the online size calculator from FAC



Uniform load  
(weight of total length S)



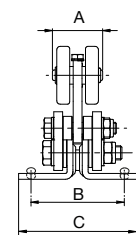
Uneven load  
(weight of Dimensions overall opening A)



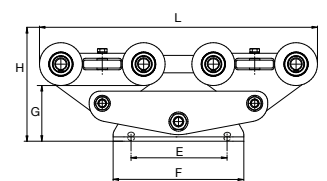
\*Measurements in mm

A	B	S
97	110	5

A (m)	C (m)	S (m)	P1 CUn (kg)	Z1 CUn (kg)	P2 NUn (kg)	Z2 NUn (kg)	P telaio (kg x ML)	TxUxH min (m)	Fixed Data
8	2.975	12	2300	5000	1600	6000	175	4.2 x 1.0 x 0.8	F1 max [kg]: 4000
10	3.975	15	2300	5000	1600	6000	137	5.2 x 1.0 x 0.8	D [m]: 0.435
12	4.975	18	2350	5000	1650	6000	114	6.2 x 1.0 x 0.8	B [m]: 0.155
14	5.975	21	2350	5000	1650	6000	96	7.2 x 1.0 x 0.8	G min [m]: 0.12
16	6.975	24	2400	5000	1700	6000	84	8.2 x 1.0 x 0.8	E min [m]: 0.60
18	7.975	27	2450	5000	1750	6000	75	9.2 x 1.0 x 0.8	S: 1.5 x A
20	8.975	30	2500	5000	1750	6000	65	10.2 x 1.0 x 0.8	



A	Overall opening
B	Space for end stop
C	Distance between trolleys
D	Space for guide roller
G min	Minimum gate height from the ground
P1	Total gate weight (including all accessories) considering a uniform load
P2	Total gate weight (including all accessories) with UNEVEN load
P telaio	Total linear weight per meter NOT considering FAC Accessories (note: considering side S with a uniform load and side A with uneven load)
S	Total gate length
T, U, H	Suggested basement dimensions
Z1	Minimum basement weight for uniform gate's load
Z2	Minimum basement weight for gate with uneven load



\*Measurements in mm

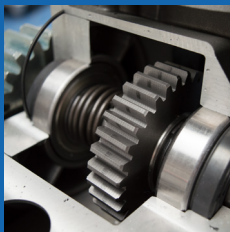
A	B	C	E
85.5	140.8	200.8	240
F	G	H	L
300	127.75	226.25	638.5

# GULLIVER RRT

The recommended sliding gate motor for the 2000H series kit  
(for leaves up to 2500 kg)



Motor with encoder technology and fan-assisted ventilation, to guarantee intensive use



Metal mechanics and machined steel gears to ensure maximum performance and durability



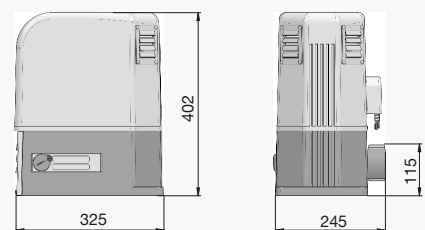
Complete with a removable control panel to facilitate the wiring of all accessories









SCAN ME

More information can be found in the GULLIVER brochure.

## DIMENSIONS



COD.	Art.				OTHER
613210	25RRT	2500		400RR	<b>ATTENTION: NOT COMPATIBLE WITH NETLINK</b> <ul style="list-style-type: none"> <li>• Self-locking</li> <li>• Electromechanical limit switches (RRT/RRTF)</li> <li>• Magnetic limit switches (RRT/M)</li> <li>• Anti-crushing safety device</li> <li>• Speed adjustment and slow down in opening and closing</li> <li>• Motor control by encoder and obstacle detection</li> <li>• Anti-inertia braking device (RRTF only)</li> </ul>
613215	25RRTF	2500		400RR	
613221	25RRT/M	2500		400RR	

# ADDITIONAL ACCESSORIES



## 1 Meter Tooth Rack

Pack of 10 x nylon rack with fixing screws. Galvanised rack with screws available in a pack of 4 or single lengths for straight weld on.



## LED Traffic Light

Control traffic with red and green LED traffic lights. Available in 24V & 230V.



## Resistive Safety Edges

A range of resistive safety edges and accessories. Available in a variety of pre-determined lengths.



## INDUS Kit

Inductive transmission system for wired safety edges on sliding gates.



## Wireless Transmitter & Receiver Kit

Make any resistive or mechanical safety edge wireless. The dual band system with selectable frequency can take up to 14 edges.

Unit 29 - 31, The IO Centre, Hearle Way, Hatfield, Hertfordshire, AL10 9EW  
contact@deasystem.net - 01707 246599

Sandholes Road, Cookstown, Co. Tyrone, BT80 9AR  
info@deasystem.net - 028 8676 6476

deasystem.net

